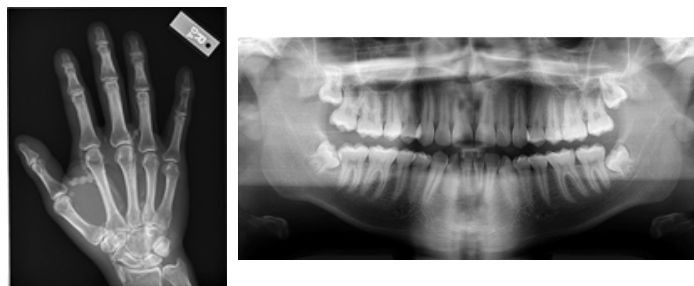


About the department

The QVH x-ray service for GP referrals/outpatients is available from 8.45am to 4.30pm Monday to Friday. Outside of these hours we offer a limited on-call service for minor injuries patients and inpatients.

We have two x-ray rooms, 1 CT room, 1 Cone Beam CT and an MRI van, and are able to undertake most examinations. We specialise in hand, facial and dental imaging, but can take most radiographic images required by hospital outpatients and GPs.



Patients who are very immobile should be referred to a larger hospital with more comprehensive equipment. Very young children (not under QVH hospital care) should be referred to a dedicated paediatric facility.

How do x-rays work?

X-rays are produced in the x-ray camera. As they pass through the body, some x-rays get absorbed (or blocked) by the body tissues or bones. The remaining x-rays make a shadow or pattern on the x-ray screen or sensor, which can be viewed by the radiographer or radiologist.



Are x-rays suitable for all patients?

X-rays are suitable for all patients, however extra consideration is made in pregnancy. All females who are aged 12-55 years and require x-rays within the pelvic or abdominal area will be asked to confirm their pregnancy status and sign a form.

If you are a parent or carer and are needed to hold your child/ relative during the x-ray, you will be asked to wear a lead apron to protect you from the x-rays. Please be aware that pregnant women are not allowed to act as 'holders' and if you are a female of child bearing age, the staff will ask you about your pregnancy status.

If you have any concerns that you may be pregnant, please inform the radiographer. Any information will be treated with the strictest confidence.

Contact details

Should you have any further questions or queries, please do not hesitate to contact us.

If you have any feedback about this leaflet, please let us know.

Radiology Department

Tel: 01342 414249

X-Ray Service

Radiology Services at
Queen Victoria Hospital (QVH)

Please ask if you
would like this leaflet
in larger print or a
different format.

Radiology Department
Issue 2 – Ref: no. 0599
Reviewed by the Patient Information Group
Published September 2020 Review September 2023

© Copyright QVH NHS Foundation Trust

qvh.nhs.uk

