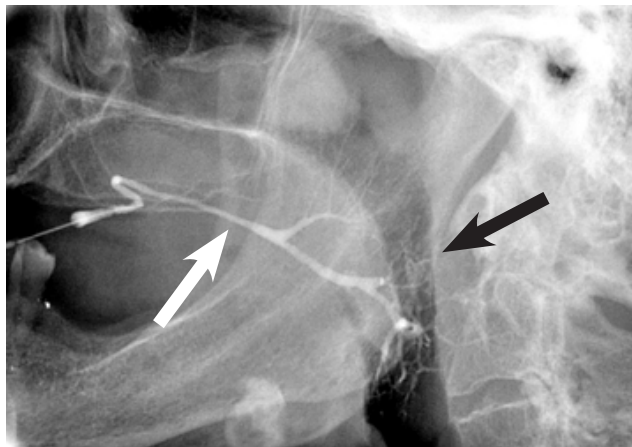


What is a Sialogram?

A Sialogram is an x-ray procedure that looks at the salivary ducts and glands. A small tube is inserted into the gland. Contrast (x-ray dye) is then injected into the salivary glands, which allows them to be seen more clearly on the x-ray pictures. The dye will show any stones, narrowed areas or if the duct is dilated.



Sialogram showing x-ray dye outlining the duct and gland

Gland – black arrow

Salivary Duct – white arrow

Will there be any discomfort?

You may feel mild discomfort when the tube is inserted into the salivary duct. No anaesthetic is required for this procedure.

Preparation for the procedure

The radiology department will give you instructions on how to prepare for your procedure (you may be asked to remove earrings/dentures etc.)

NB. Please tell the staff if you are pregnant or suspect that you might be.

During the Procedure

- You will lie on your back and the x-ray equipment will move into position. We may perform a check x-ray to ensure the equipment is positioned over the jaw/gland area.
- If required, you will be given a sour tasting liquid, such as lemon juice; this will open your salivary ducts.
- With your mouth open, the salivary duct is located and the tube is inserted.
- Contrast is injected into the salivary glands through the tube and images are taken.
- The contrast will drain from the salivary duct into your mouth - once the tube has been removed. This can be swallowed or spat out.

After the Procedure

You may eat and drink normally. You may experience some slight discomfort or mild swelling in your mouth after the procedure.

If you are worried about any symptoms you experience after procedure, contact the radiology department on 01342 414249 or contact your GP.

The images will be reviewed by a radiologist and the report sent back to the Doctor or Consultant who referred you for the procedure.

Sialogram

PLEASE GIVE FEEDBACK ABOUT THIS INFORMATION
LEAFLET

Patient information

Please ask if you
would like this leaflet
in larger print or a
different format.

Radiology Department
Issue 2 – Ref: no. 0613
Approved by the Patient Information Group
Print October 2020 – Review October 2023

