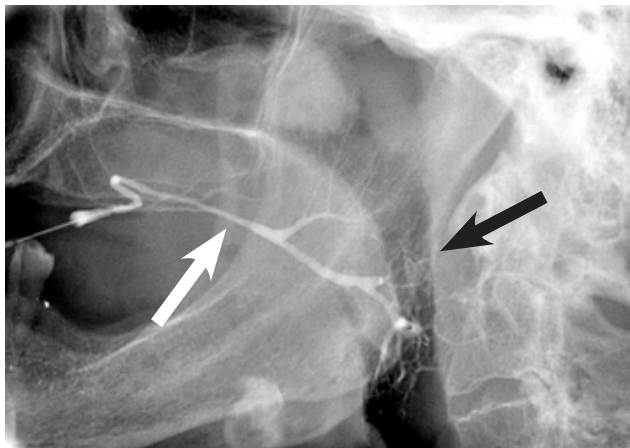


## What is a Sialogram?

A Sialogram is an x-ray procedure that looks at the salivary ducts and glands. A small tube is inserted into the gland. Contrast (x-ray dye) is then injected into the salivary glands, which allows them to be seen more clearly on the x-ray pictures. The dye will show any stones, narrowed areas or if the duct is dilated.



Sialogram showing x-ray dye outlining the duct and gland

Black arrow: Gland

White arrow: Salivary duct

## Will there be any discomfort?

You may feel mild discomfort when the tube is inserted into the salivary duct. No anaesthetic is required for this procedure.

## Preparation for the procedure

The radiology department will give you instructions on how to prepare for your procedure (you may be asked to remove earrings/dentures etc.)

**NB. Please tell the staff if you are pregnant or suspect that you might be.**

## During the Procedure

- You will lie on your back and the x-ray equipment will move into position. We may perform a check x-ray to ensure the equipment is positioned over the jaw/gland area.
- If required, you will be given a sour tasting liquid, such as lemon juice; this will open your salivary ducts.
- With your mouth open, the salivary duct is located and the tube is inserted.
- Contrast is injected into the salivary glands through the tube and images are taken.
- The contrast will drain from the salivary duct into your mouth - once the tube has been removed. This can be swallowed or spat out.

## After the Procedure

You may eat and drink normally. You may experience some slight discomfort after the procedure.

**If you are worried about any symptoms you experience after procedure, contact the radiology department on 01342 414249 or contact your GP.**

The images will be reviewed by a radiologist and the report sent back to the Doctor or Consultant who referred you for the procedure.

## Sialogram

## Patient information

PLEASE GIVE FEEDBACK ABOUT THIS INFORMATION  
LEAFLET

Please ask if you  
would like this leaflet  
in larger print or a  
different format.

Radiology Department  
Issue 1 – Ref: no. 0613  
Approved by the Patient Information Group  
Print January 2018 – Review December 2020

